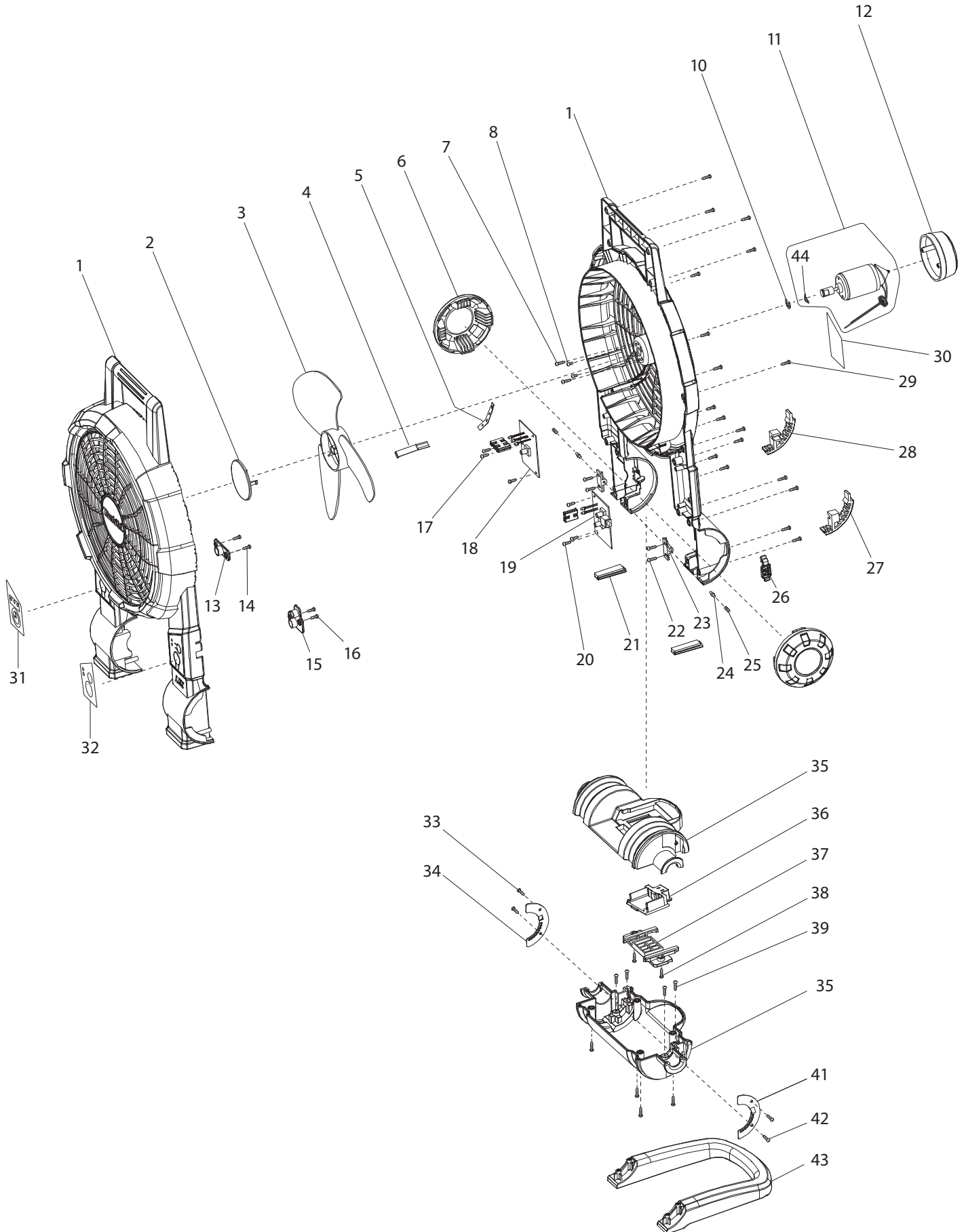




03 - 2012
BCF201Z
18 / 14.4V CORDLESS FAN



Item No.	Part No.	Description	Qty	Unit	
1	TE00000002	HOUSING SET (BLUE)	1	PC.	
2	TE00000003	FAN BLADE COVER	1	PC.	
3	TE00000004	FAN BLADE	1	PC.	
4	TE00000005	WIRE COVER A	1	PC.	
5	TE00000006	WIRE COVER B	1	PC.	
6	TE00000007	SIDE COVER	2	PC.	
7	TE00000028	TAPPING SCREW 3X14	2	PC.	
8	TE00000030	P.H.SCREW M3X5	2	PC.	
10	TE00000009	STOP RING	1	PC.	
11	1	TE00000041	MOTER ASSEMBLY	1	PC.
		Item No.44			
	2	TE00000107	MOTER ASSEMBLY	1	PC.
		Item No.44			
12	TE00000011	MOTOR COVER	1	PC.	
13	TE00000012	BUTTON PROTECTOR R	1	PC.	
14	TE00000029	TAPPING SCREW 3X10	2	PC.	
15	TE00000013	BUTTON PROTECTOR L	1	PC.	
16	TE00000029	TAPPING SCREW 3X10	2	PC.	
17	TE00000029	TAPPING SCREW 3X10	3	PC.	
18	TE00000042	TIME PCB BOARD	1	PC.	
19	TE00000043	SWITCH PCB BOARD	1	PC.	
20	TE00000029	TAPPING SCREW 3X10	3	PC.	
21	TE00000016	FRONT FOOT	2	PC.	
22	TE00000028	TAPPING SCREW 3X14	4	PC.	
23	TE00000017	SPRING HOLDER	2	PC.	
24	TE00000008	PIN	2	PC.	
25	TE00000027	SPRING	2	PC.	
26	TE00000018	ADAPTER SOCKET CAP	1	PC.	
27	TE00000019	REAR FOOT L	1	PC.	
28	TE00000020	REAR FOOT R	1	PC.	
29	TE00000028	TAPPING SCREW 3X14	18	PC.	
31	TE00000032	SWITCH LABEL L	1	PC.	
32	TE00000033	SWITCH LABEL R	1	PC.	
33	TE00000029	TAPPING SCREW 3X10	2	PC.	
34	TE00000025	CLUTCH PLATE R	1	PC.	
35	TE00000021	BASE SET	1	PC.	
36	TE00000022	TERMINAL	1	PC.	
37	TE00000023	TERMINAL HOLDER	1	PC.	
38	TE00000028	TAPPING SCREW 3X14	2	PC.	
39	TE00000028	TAPPING SCREW 3X14	8	PC.	
41	TE00000024	CLUTCH PLATE L	1	PC.	
42	TE00000029	TAPPING SCREW 3X10	2	PC.	
43	TE00000026	STAND	1	PC.	
44	TE00000040	WAVE WASHER	1	PC.	

ACCESSORIES

A01	TEB0000002	AC ADAPTER	1	PC.
A02	194205-3	18V LI-ION BATTERY BL1830	1	PC.
	194230-4	18V LI-ION BATTERY BL1830 2/PK	1	PK.
	194288-3	18V LI-ION BATTERY BL1830 10/PK	1	PK.
	194309-1	18V LI-ION BATTERY BL1815	1	PC.
	194428-3	18V LI-ION BATTERY BL1815 2/PK	1	PK.
	194604-9	18V LI-ION BATTERY BL1815 10/PK	1	PK.
	194066-1	18V LI-ION BATTERY BL1430	1	PC.
	194397-8	18V LI-ION BATTERY BL1430 2/PK	1	PK.
	194559-8	18V LI-ION BATTERY BL1415	1	PK.

Item No.		Part No.	Description	Qty	Unit
A03	1	DC18RA	CHARGER DC18RA	1	PC.
	2	DC18RC	CHARGER DC18RC	1	PC.
		DC18SD	CHARGER DC18SD	1	PC.
		DC24SC	CHARGER DC24SC	1	PC.
		DC18SE	AUTOMOTIVE CHARGER DC18SE	1	PC.